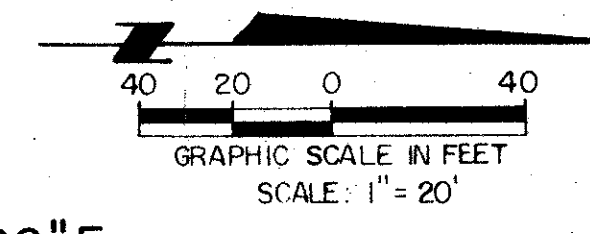


PLAT NO. 14B EASTPOINTE SUBDIVISION

(A PLANNED UNIT DEVELOPMENT)

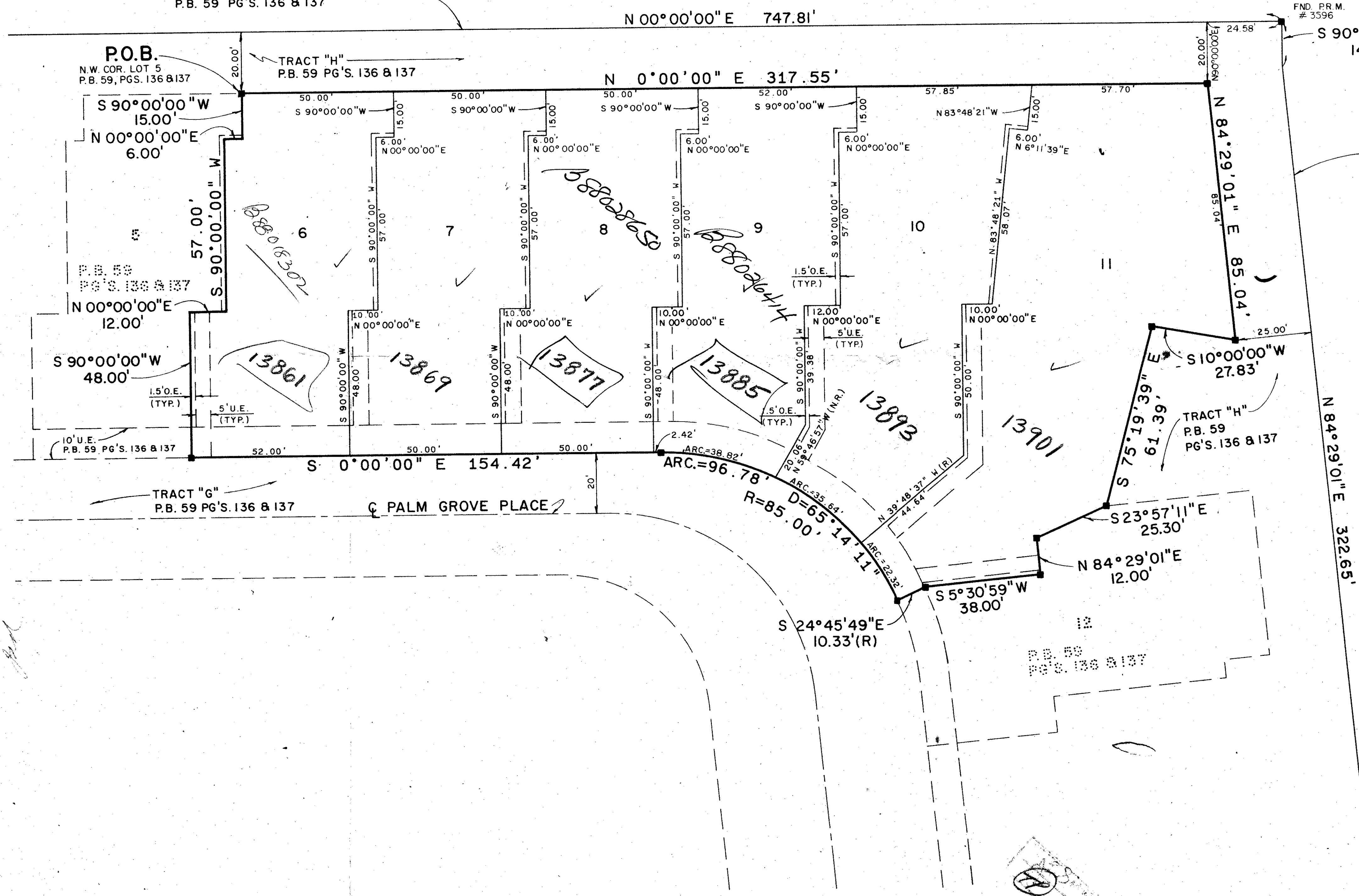
117

BEING A PLAT IN SECTION 27, TOWNSHIP 41 SOUTH, RANGE 42 EAST, PALM BEACH COUNTY, FLORIDA AND BEING A REPLAT OF LOTS 6 THROUGH 11 INCLUSIVE AND A PORTION OF TRACT "H" OF PLAT NO. 14A EASTPOINTE SUBDIVISION (A PLANNED UNIT DEVELOPMENT) AS RECORDED IN PLAT BOOK 59, PAGES 136 AND 137, PUBLIC RECORDS OF PALM BEACH COUNTY, FLORIDA.
 SEPT., 1988
 SHEET 2 OF 2



WEST LINE OF PLAT 14A EASTPOINTE SUBDIVISION
 P.B. 59 PG'S. 136 & 137

NORTH LINE OF PLAT 14A EASTPOINTE SUBDIVISION
 P.B. 59, PG'S. 136 & 137



NOTES:

- NO BUILDING OR ANY KIND OF CONSTRUCTION SHALL BE PLACED ON UTILITY OR DRAINAGE EASEMENTS.
- WHERE UTILITY AND DRAINAGE EASEMENTS OVERLAP AND/OR INTERSECT, THE DRAINAGE EASEMENT SHALL TAKE PRECEDENCE.
- NO STRUCTURES, TREES OR SHRUBS SHALL BE PLACED ON DRAINAGE EASEMENTS OR UTILITY EASEMENTS OCCUPIED BY WATER AND SEWER.
- APPROVAL OF LANDSCAPING ON UTILITY EASEMENTS OTHER THAN WATER AND SEWER SHALL BE ONLY WITH THE APPROVAL OF ALL UTILITIES OCCUPYING SAME.
- BEARINGS SHOWN AND DESCRIBED HEREON ARE BASED ON THE WEST LINE OF PLAT NO. 14A EASTPOINTE SUBDIVISION AS RECORDED IN PLAT BOOK 59 PAGES 136 & 137 INCLUSIVE, PUBLIC RECORDS OF PALM BEACH COUNTY, FLORIDA BEING NORTH 00°00'00" EAST AND ALL OTHER BEARINGS HEREON ARE RELATIVE THERETO.
- -DENOTES PERMANENT REFERENCE MONUMENT (P.R.M.) - STAMPED P.L.S. NO. 3596.
- U.E. -DENOTES UTILITY EASEMENT.
- O.E.-DENOTES ROOF OVERHANG EASEMENT.
- SETBACKS ARE TO MEET THE PALM BEACH COUNTY ZONING CODE.
- (R) -DENOTES RADIAL LINE.
- (NR) -DENOTES NON-RADIAL LINE.
- THE UNDERLYING BOUNDARY SURVEY MEETS THE INTENT OF THE MINIMUM TECHNICAL STANDARDS FOR LAND SURVEYING IN THE STATE OF FLORIDA AS SET FORTH BY THE FLORIDA BOARD OF PROFESSIONAL LAND SURVEYORS PURSUANT TO SECTION 472.027, FLORIDA STATUTES, AND ADOPTED IN CHAPTER 21HH-6, FLORIDA ADMINISTRATIVE CODE, EFFECTIVE SEPTEMBER 1, 1981.

SUBDIVISION EASTPOINTE #14B
 DATE 11/17/88
 RE 80-28
 9/3/88

TAZ 797

Pet. 80-28
 Collect

61/117

METRIC ENGINEERING INC.
 ENGINEERS - PLANNERS - SURVEYORS
 MIAMI - FORT LAUDERDALE
 WEST PALM BEACH - PANAMA CITY

PLAT No. 14B
 EASTPOINTE SUBDIVISION
 SHEET 2 OF 2